



LTC-600 Thin Client

Easily Deployed, Centrally Managed, Secure

Overview

The BOSaNOVA LTC-600 Thin Client offers the very best TN5250e and TN3270e emulation available for a LAN environment. In contrast to standard text-based terminals, the BOSaNOVA LTC-600 includes Windows 2000-2003 Terminal Server (RDP) and Citrix (ICA) client in its standard configuration. Full support for 122-key keyboards is also built in to allow maximum productivity for users migrating from other 5250 or 3270 terminals. Performance tests measuring response time for our TN5250e and TN3270e embedded emulation indicate that the BOSaNOVA LTC-600 outperforms similar products based on Windows CE by a ratio of five to one!

Advantages

- PCI compliant embedded TN5250e- and TN3270e-based display and printer emulation for connection to IBM iSeries (AS/400) and zSeries (S/390) systems, employing the best fonts in the industry, and VT100, Wyse 60 and Xterm emulators
- Support of Provisions Networks, XenDesktop and Leostream VDI clients
- Compatible with full-featured 122-key keyboard (optional) enabling efficient work with host applications
- Includes RDP, ICA and Propalms clients
- File explorer feature providing visualization and browsing of local drives
- Thunderbird email client, PDF Reader, CUPS printing support
- Centralized configuration, management, and security via the Remote Terminal Administrator utility, for low TCO (Total Cost of Ownership)
- Multiple network share ability
- Optional internal 802.11b/g wireless

Versatile Operating Environment

The BOSaNOVA LTC-600 supports three operating modes:

- **WBT Mode** — which acts like a “Windows CE-type” Thin Client, supporting full-screen applications only
- **Desktop Mode** — which provides a “Windows Vista-style” user interface and allows full windowing of the active applications
- **Kiosk Mode** — dedicated kiosk type of interface not configurable by the user of the terminal

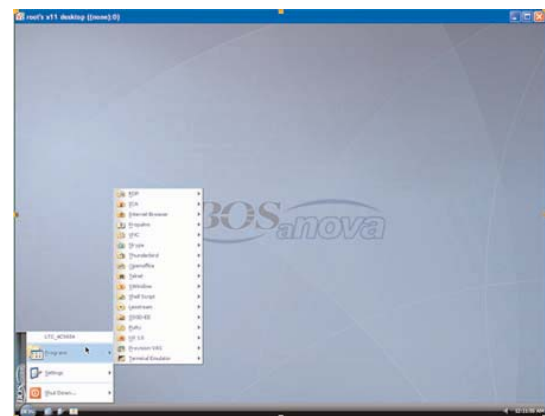


The BOSaNOVA LTC-600 supports one parallel printer port, two serial ports, three USB 2.0 ports, two PS/2 ports, 10/100 base-T Ethernet interface, and audio.

Enterprise Class Remote Administration

The BOSaNOVA LTC-600 Thin Client is simple to configure and manage locally or remotely using the BOSManager, which enables the following tasks:

- Complete terminal configuration from a central location
- User lock-out from configuration changes
- Scheduling of firmware updates
- Cloning of user environments
- Control over which applications run on a particular terminal



The BOSaNOVA LTC-600 offers the look and feel of Windows Vista and the versatility and speed of Linux.

BOSaNOVA, Inc. 2012 W. Lone Cactus Drive, Phoenix, AZ 85027

Tel: (866) 865-5250 ● Fax: (623) 516-8697 ● sales@bosanova.net ● www.bosanova.net



LTC-600 Thin Client

Easily Deployed, Centrally Managed, Secure

Options

Part Number	7602
Standard Flash/Ram	256MB/256MB (Flash/Ram)
Standard Client Software	
ICA	Version 10
Web Interface	•
RDP	5.2
Host Access	Supports 8 TN5250e and TN370e sessions, Telnet with SSH, SSL, Ericom, Wyse 60, VT100 and VT200, x-Term, and Optional SCO
Browser	Firefox or Mozilla
SSGD-EE	•
Propalms TSE	•
Video	8X AGP, Wide Screen Support
@ 8-Bit Color	Up to 1280x1024 @ 75 Hz Up to 1024x768 @ 85 Hz
@16-Bit Color	Up to 1280x1024 @ 75 Hz Up to 1024x768 @ 85 Hz
@24-Bit Color	Up to 1280x1024 @ 75 Hz Up to 1600x1200 @ 60 Hz

Software Configuration

Operating System	Linux
Security Features	Read-only file system, locked-down user account, administrative passwords
Client Software	
Citrix ICA	•
X-Windows	•
NX Client	•
Secure Gateway	•
BOSmanager	•
ThinPrint	•
VDI Client	Provision Networks, Leostream, XenDesktop, VMWare
Special Features	Autostart/auto-restart connection, multiple level lock-down user

Management

BOSmanager	•
Push/Pull Updates	•
VNC	•
Software/Configuration Cloning	•

Hardware Configuration

Form Factor	Compact stand-alone metal case
CPU	VIA Eden 600MHz
Audio	•
Mic In/Line Out	•
Internal Speaker	•
Networking	Autosensing, 10/100 Ethernet, RJ-45, WakeOnLAN, PXE boot, USB 802.11g support
I/O and Expansion	
Serial Port – D-Sub 9-Pin Male Connector	2
Parallel Port – D-Sub 25-Pin Female Conn.	1
USB Ports – Type 2	3
PS/2 Ports	1 Keyboard/1 Mouse
Physical Specifications	
Dimensions	1.75" W x 9.5" H x 9.0" D 4.3 mm x 24.8 mm x 22.3 mm
Shipping Weight	6.2 lbs.
Environmental Operating Temperature	32-104° F (0-40° C) 20-90% non-condensing
Operating Humidity	0-20,000 ft (0-6,096 m)
Operating Altitude	100-240 VAC, 50-60 Hz
Power Requirements	Max AC Input Power: 30 W UL, UL1950, FCC Class B, cUL,
Safety Certifications	CSA-C22.2, No. 950-M89, CE Mark; EMC/LVD, TUV-GS
Security	Kensington Security Lock Slot

Ordering Information

PID	Description
7602	LTC-600 with TN5250e/3270e, Mozilla Browser, JVM, RDP, ICA, Adobe Acrobat Reader, POP3
8122x	122-key 5250/PC Keyboard, Driverless
8009	OpenOffice Suite and Java Cache V1.1.3
9009	Internal mini PCI b/g wireless adapter



V0508

BOSANOVA, Inc. 2012 W. Lone Cactus Drive, Phoenix, AZ 85027

Tel: (866) 865-5250 • Fax: (623) 516-8697 • sales@bosanova.net • www.bosanova.net