



LTC-1300 1.5GHz Thin Client

Easily Deployed, Centrally Managed, Secure

Overview

The LTC-1300 represents a quantum leap forward in high-end Linux for the desktop. Powered by 1.5 GHz Via processor CPU and featuring the the most advanced Linux desktop deployment available anywhere.

With built-in Web Browser (Firefox), Terminal Emulation, Adobe Acrobat Reader, Common Unix Printing System (CUPS) for enhanced printing capabilities, Thunderbird e-mail client and OpenOffice embedded on the Thin Client, companies of all sizes can take advantage of the many benefits of thin client computing.

The LTC-1300 is available with an 802.11 b/g internal wireless option. The built-in PCI and PCMCIA expansion slots can provide capability for fax cards, video cards, and wireless network adapters.

Advantages

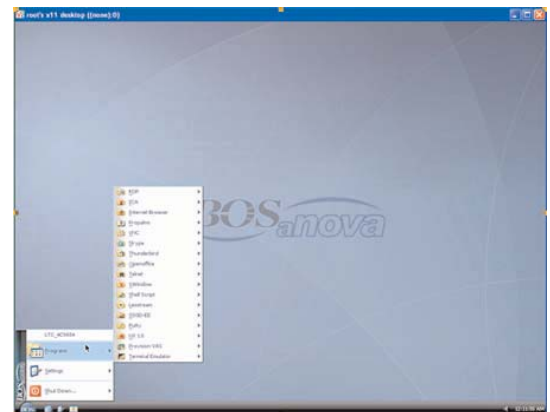
- 1.5 GHz Via Processor with 8X AGP Graphics Accelerator
- Windows Vista look and feel with Linux stability and performance
- Firefox browser with full Macromedia and Sun JVM support
- OpenOffice included for word-processor, spreadsheet and presentation support
- File explorer providing visualization and browsing of local drives with copy/paste functions
- Support of Provision Networks, XenDesktop, and Leostream VDI clients
- Writable shared partition and multiple network share ability
- Integration with VoIP (Skype)
- Real Adobe Acrobat Reader, POP3 e-mail, Lotus Notes support
- Integrated with CUPS for enhanced printing capabilities
- PCI compliant GUI TN5250e and TN3270, with customizable Hot Spots
- 802.11 b/g internal wireless option
- ICA V10, RDP 5.2, Propalms, X-Windows, VNC clients
- PCI and PCMCIA expansion slots standard
- DVI for optimal Flat Panel Display
- Customizable wallpaper
- CrossRun (enhanced RDP based Terminal Server product) standard
- Expandable to 1GB DDR2 and 4GB Storage



Enterprise Class Remote Administration

The BOSaNOVA LTC-1300 Thin Client is simple to configure either locally or remotely using SNMP based BOSmanager, which enables the following tasks:

- Complete terminal configuration from a central location, including terminal emulation settings
- User lock-out from configuration changes
- Scheduling of power down/power up
- Cloning of user environments
- Control over which applications run on a particular terminal



The BOSaNOVA LTC-1300 offers the look and feel of Windows Vista and the versatility and speed of Linux.

BOSaNOVA, Inc. 2012 W. Lone Cactus Drive, Phoenix, AZ 85027

Tel: (866) 865-5250 ● Fax: (623) 516-8697 ● sales@bosanova.net ● www.bosanova.net



LTC-1300 1.5GHz Thin Client

Easily Deployed, Centrally Managed, Secure

Options

Part Number	790x
Standard Flash/RAM	512MB x 512MB
Standard Client Software	
ICA	Version 10
Web Interface	•
RDP	5.2
Host Access	Supports 8 TN5250e and TN370e sessions, Telnet with SSH, SSL, Ericom, Wyse 60, VT100 and VT200, x-Term, and Optional SCO
Browser	Firefox
Propalms	•
CrossRun	•
VDI	Provision Networks, XenDesktop, Leostream, VMWare
Video	8X AGP
Maximun Video Resolution and Refresh Rate	
@ 32-Bit Color	Up to 1600 x 1200
Wide Screen Support	•

Software Configuration

Operating System	Linux
Security Features	Read-only file system, locked-down user account, administrative passwords
Client Software	
Citrix ICA	•
RDP	•
NX Client	•
X-Windows	•
OpenOffice	•
BOSmanager	•
Special Features	Autostart/auto-restart connection, multiple level lockdown user interface

Management

BOSmanager Support	•
Push/Pull Updates	•
VNC for Remote Configuration	•
Software/Configuration Clonning	•

Hardware Configuration

Form Factor	Compact metal case
CPU	VIA 1.5 GHz
Audio	
Mic In/Line Out	•
Internal Speaker	•
Networking	Autosensing, 10/100 Ethernet, RJ-45, WakeOnLan, PXE boot, Internal/External wireless option
I/O and Expansion	
Serial Port – D-Sub 9-Pin Male Connector	2
Parallel Port – D-Sub 25-Pin Female Conn.	1
USB Ports – Type 2	4
PS/2 Ports	1 Keyboard/1 Mouse
PCMCIA and PCI	•
Physical Specifications	
Dimensions	2" W x 11.5" H x 8.2" D 53mm x 292mm x 237mm
Shipping Weight	8.4 lbs.
Enviornmental	
Operating Temperature	32-104° F (0-40° C)
Operating Humidity	20-90% non-condensing
Operating Altitude	0-20,000 ft (0-6,096 m)
Power Requirements External Power Option	100-240 VAC, 50-60 Hz Max AC Input Power: 15 W
Safety Certifications	UL, UL1950, FCC Class B, cUL, CSA-C22, No. 950M89, CE Mark: EMC/LVD, TUV-GS
Security	Kensington Security Lock Slot

Ordering Information

PID	Description
7901	LTC-1300 5250/3270, Linux, OpenOffice, JVM, RDP, ICA, Adobe Acrobat Reader
9009	Built-in internal 802.11 b/g wireless
8012	VESA Mounting Bracket
8122x	122-key Driverless PC Keyboard



BOSaNOVA, Inc. 2012 W. Lone Cactus Drive, Phoenix, AZ 85027

Tel: (866) 865-5250 • Fax: (623) 516-8697 • sales@bosanova.net • www.bosanova.net